

PRODUCT INFORMATION SHEET

VENT VENTILATION & DRAINAGE BATTEN 10MM VB10

DESCRIPTION

The VENT VB10 is a polypropylene ventilation and drainage batten designed to facilitate passive airflow and cavity drainage between the roofing underlay or membrane and the roof cladding. The VENT VB10 prevents the transfer of dew point from the underside of the roof cladding to the underside of the roofing underlay or membrane.

FEATURES

- Convenient peel-off adhesive backing reduces the need for nails or glue
- Insect proof - 4mm vents prevent ingress of nesting insects
- Provides passive airflow of 8,000mm² per linear metre
- Easy to install - manufactured in 1800mm lengths for easy handling
- Strong and durable - when used as a vented batten on top of roofing battens, the VENT VB10 has been upgraded in strength and tested to exceed foot traffic weight requirements on the roof above

BUILDING REGULATIONS, NEW ZEALAND BUILDING CODE (NZBC)

VENT Ventilation & Drainage Batten 10mm, if designed, used, installed and maintained in accordance with the statements and conditions of this Product Technical Statement, will meet or contribute to meeting the following provisions of the NZBC:

- Clause B1 STRUCTURE: Performance B1.3.1, B1.3.2 and B1.3.4. VENT Ventilation & Drainage Batten 10mm meets the requirements for loads arising from gravity loads, wind and impact [i.e. B1.3.3 (b), (h) and (j)]
- Clause B2 DURABILITY: Performance B2.3.1 (b) 15 years and B2.3.2. VENT Ventilation & Drainage Batten 10mm meets these requirements.
- Clause E2 EXTERNAL MOISTURE: Performance E2.3.2, E2.3.5 and E2.3.6. VENT Ventilation & Drainage Batten 10mm contribute to meeting this requirement.
- Clause E3 INTERNAL MOISTURE: Functional requirement E3.2 (c). VENT Ventilation & Drainage Batten 10mm contribute to meeting this requirement
- Clause F2 HAZARDOUS BUILDING: Performance F2.3.1. VENT Ventilation & Drainage Batten 10mm meets this requirement.

APPRAISALS

- BRANZ appraisal No. 979 [2017]

SCOPE OF USE

The VENT Ventilation & Drainage Batten 10mm VB10, has been BRANZ appraised for use as non-structural roof battens and vents for use with pitched and skillion roof construction on buildings within the following scope:

- The scope limitations of NZBC Acceptable Solution E2/AS1, Paragraph 1.1 with regards to building height and floor plan area; and,
- With profiled metal roof cladding; and,
- Situated in NZS 3604 Wind Zones up to, and including, Extra High
- Highly recommended for roofs with cladding profiles with a large area of surface contact with roofing underlays i.e. trapezoidal or deep trough profiles
- Can be used in commercial and residential construction
- To be used as part of a proprietary ventilation system
- Building designers are responsible for incorporation of Roof Ventilation Products into their design for weather tightness and detailing of junctions

INSTALLATION

1. Peel-off adhesive backing for temporary fixing
2. When applying the VB10, surfaces should be free of moisture and dust
3. The temporary fixing is designed to hold the VB10 in position for a limited period. In unfavourable conditions, nail or screws can be used to hold the VB10 in place
4. Can be cut with a knife, cutting tool or hand saw
5. Cladding fixings must be fixed through the VENT VB10 into the purlins. NB: The VB10 should be treated as non-structural timber cavity batten
6. Roof cladding fixings must conform to manufacturer's specifications
7. The VENT Ventilation & Drainage Batten 10mm should not be exposed to direct sunlight for more than 30 days

PRODUCT INFORMATION SHEET

VENT VENTILATION & DRAINAGE BATTEN 10MM VB10

WARRANTY

- 15 years

MAINTENANCE

- No maintenance requirements

STORAGE

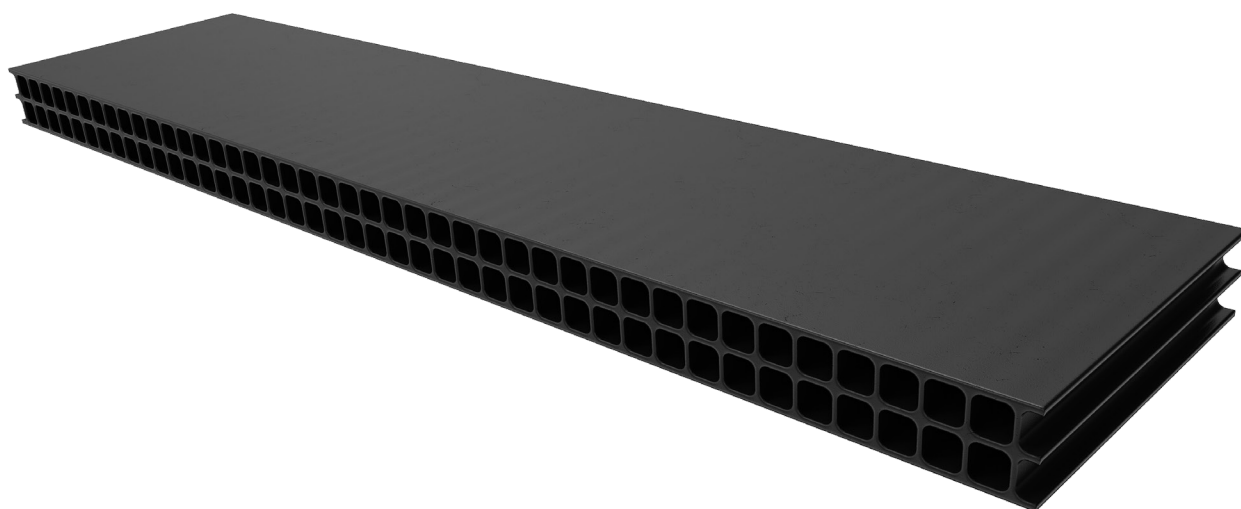
- Handling and storage of VENT Roof Ventilation Products, whether on-site or off-site, is under the control of the building contractor. Roof Ventilation Products must be protected from direct sunlight and physical damage, and should be stored flat and under cover

CONDITIONS & LIMITATIONS

- VB10 Ventilation & Drainage Batten must be installed in accordance with product installation guide
- VB10 Ventilation & Drainage Batten can installed on both timber or steel roof and wall framing
- VB10 Ventilation & Drainage Battens are suitable for use with any synthetic or bitumen based underlays
- VB10 Ventilation & Drainage Battens are suitable for use under, but not limited to masonry tiles, terracotta tiles, metal tiles, profiled metal claddings, slate and composite claddings

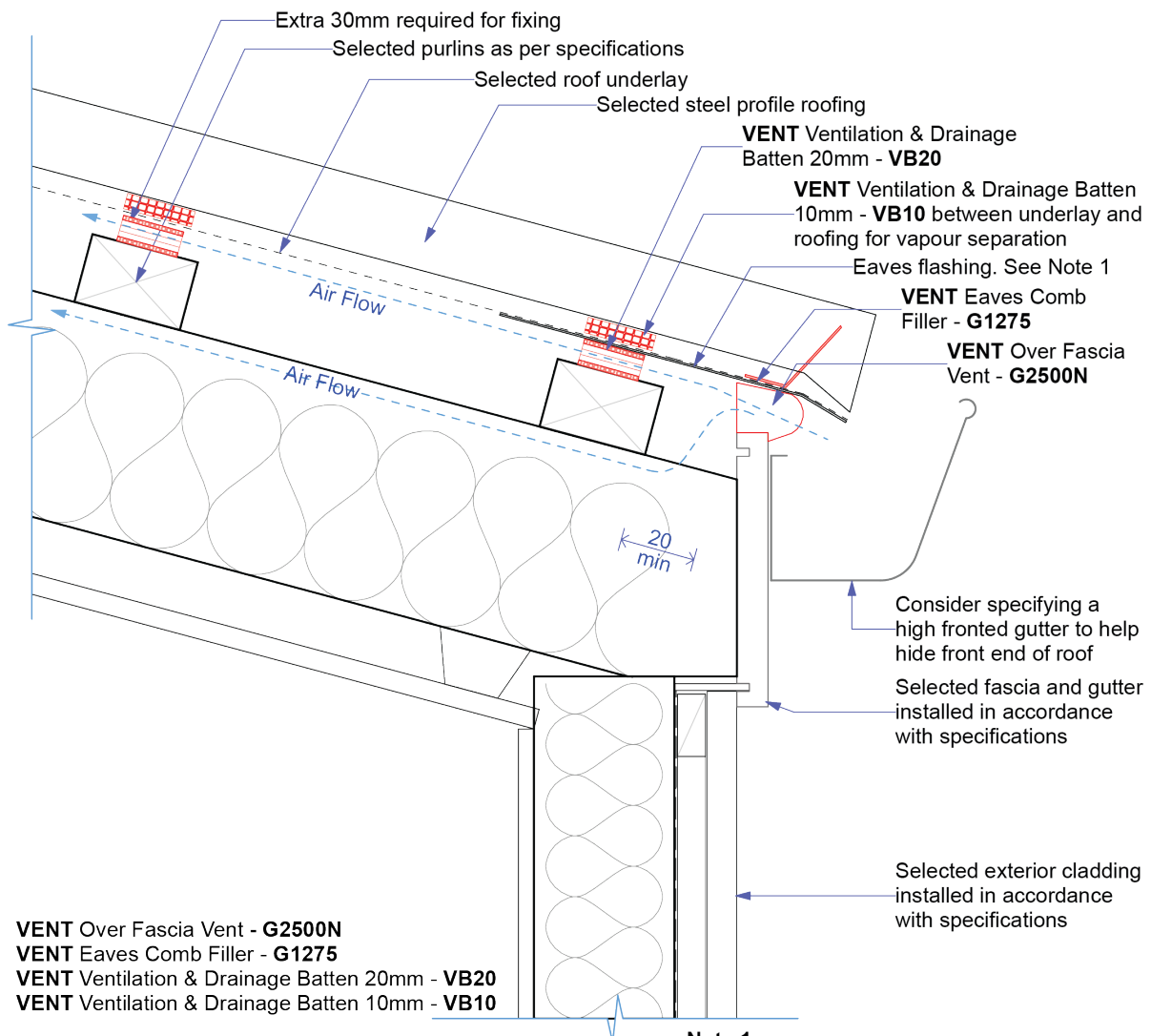
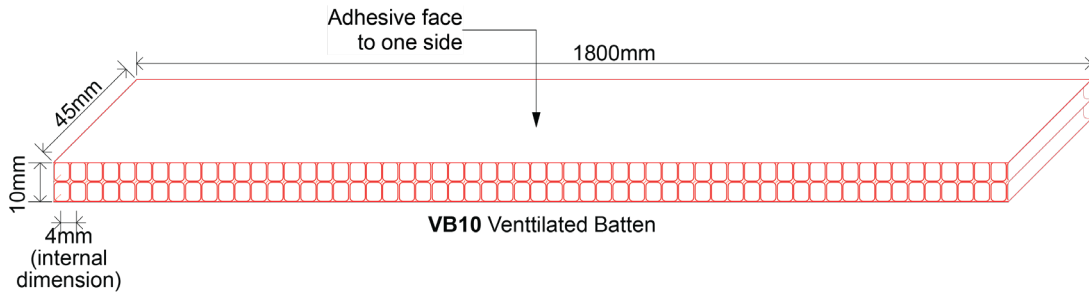
SPECIFICATION

Dimensions	1800mm L x 45mm W x 10mm H
Colour	Black
Material	Polypropylene
Box Quantity	50 x 1800mm (90m)



PRODUCT INFORMATION SHEET

VENT VENTILATION & DRAINAGE BATTEN 10MM VB10



VENT Over Fascia Vent - G2500N
VENT Eaves Comb Filler - G1275
VENT Ventilation & Drainage Batten 20mm - VB20
VENT Ventilation & Drainage Batten 10mm - VB10

PROFILED STEEL ROOF CLADDING
 Ventilated Fascia - Skillion Roof No Eave
 (25,000mm² lin/m)

A minimum of 20mm gap between the bottom purlin and Over Fascia Vent must be maintained to allow air flow into roof cavity

Note 1
 Eave flashing required where all of the following conditions are met
 - Roof pitch less than 10° and,
 -Soffit width less than or equal to 100mm and,
 -Wind zone is Very High or greater.