

VENT OVER FASCIA VENTILATORS

G1200 & G2500N

DESCRIPTION

The VENT G1200N and G2500N Over Fascia Vents are designed to discreetly ensure a calculated free flow of air into the roof space between the roof membrane and the fascia board.

FEATURES

- VENT Over Fascia Vents provide free airflow of 25,000mm² and 10,000mm² per linear metre
- G2500N = 25,000mm² per linear metre or 1/150
 - G1200N = 10,000mm² per linear metre or 1/300
 - Allows hot air to escape the roof void and manages condensation
 - Easy to install
 - Not visible as hidden by spouting/gutter
 - The only solution to ventilate builds with no eaves
 - Insect proof - 4mm vents prevent ingress of nesting insects

SCOPE OF USE

- In accordance with BS5250
- G1200N - Recommended for roof pitches >15°
- G2500N - Recommended for roof pitches <15° and any degree skillion roof
- Compatible with timber or metal fascia
- Suitable for new builds or renovations
- Should be used in conjunction with the VENT Roll Panel Vent/ Eaves Baffle (G502CL) for traditional roof types or VENT Ventilation & Drainage Batten 20mm (VB20) for skillion roof types, to ensure continuous and unimpeded airflow past the insulation
- Can be used individually or as part of a proprietary ventilation system

STORAGE

Handling and storage of the VENT Ventilation Products, whether on-site or off-site, is under the control of the building contractor. Roof Ventilation Products must be protected from direct sunlight and physical damage, and should be stored flat and under cover.

WARRANTY

- 15 years

MAINTENANCE

- No maintenance requirements

G1200N Over Fascia Vent



G2500N Over Fascia Vent



VENT OVER FASCIA VENTILATORS

G1200 & G2500N

INSTALLATION

1. The VENT G2500N & G1200N Over Fascia Vents should be screw fixed (for metal fascia) or nail fixed (for timber fascia) to the top of the fascia board through the fixing holes provided along the full length of the eaves shown
2. Ensure screws meet metal fascia manufacturers warranty requirements.
- We recommend the use of Armagalve fixings
3. The Over Fascia Vents butt up to each other along the entire run of fascia.
4. The Over Fascia Vents are placed on top of the fascia and under the building membrane.
5. The G2500N Over Fascia Vent should be installed with an eaves flashing above.
6. VENT Over Fascia Vents may require adjustment to fascia or roof heights depending on the type of Over Fascia Vent, the type of fascia and/or combination of vent products being installed.
7. VENT Over Fascia Vents should not be exposed to direct sunlight for more than 30 days.

For technical assistance, contacts the DriSpace team

SPECIFICATIONS

G2500N DIMENSIONS	1000mm L x 32mm H
G1200N DIMENSIONS	1000mm L x 17mm H
COLOUR	Black
MATERIAL	Polyethylene
BOX QUANTITY	20mm x 1000mm (20m)

VENT OVER FASCIA VENTILATORS

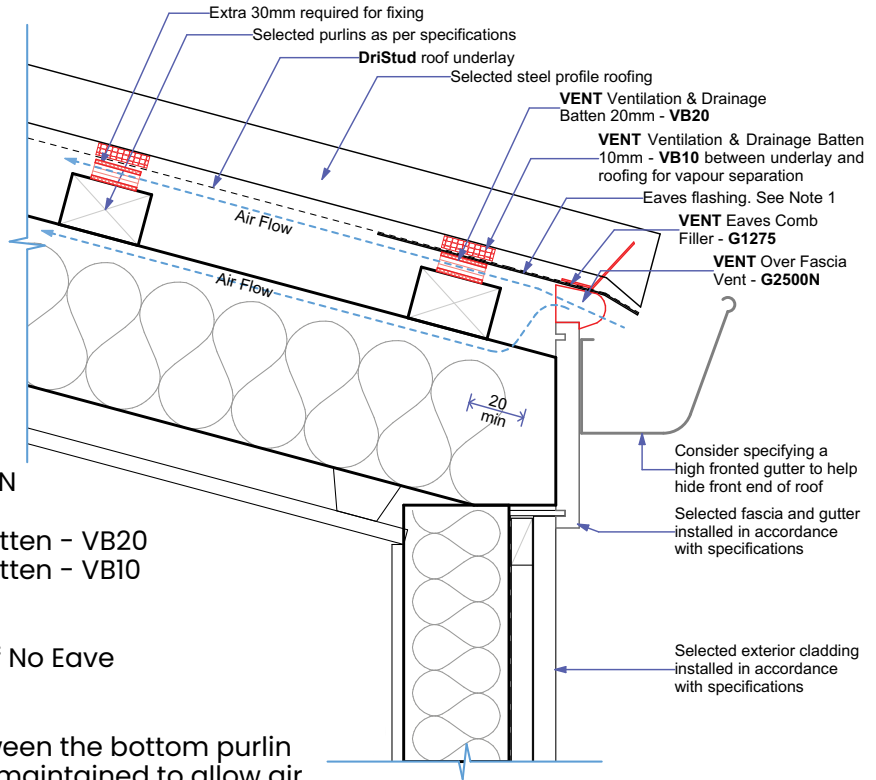
G1200 & G2500N

TECHNICAL DRAWING

Note 1

Eave flashing required where all of the following conditions are met:

- Roof pitch less than 10° and,
- Soffit width less than or equal to 100mm and,
- Wind Zone is Very High or greater



- VENT Over Fascia Vent - G2500N
- VENT Eaves Comb Filler - G1275
- VENT Ventilation & Drainage Batten - VB20
- VENT Ventilation & Drainage Batten - VB10

PROFILED STEEL ROOF CLADDING

Ventilated Fascia - Skillion Roof No Eave (25,000mm² lin/m)

A minimum of 20mm gap between the bottom purlin and Over Fascia Vent must be maintained to allow air flow into the roof cavity

