

OCTOBER 2023

# DriSpace Product Range

 **DRISPACE**

 **DriStud**™  **PROCTOR**  **PASSIVE**  **VENT**  
PASSIVE VENTILATION



# DRISPACE

DrISpace is a division of TCL Hunt, a New Zealand company whose origin dates back to 1937.

TCL Hunt has been a leader in the supply of high quality technical products and equipment to many different industries including the building sector.

DrISpace product range consists of three brands, with varying capabilities.

- DRISTUD: Fire Retardant Wall Wrap, Fire Retardant and non-Fire Retardant Roof Underlays, Window Flashing Tape and Self-Supporting White Faced Foils.
- VENT: Passive Ventilation products for roof and wall
- PROCTORPASSIVE: Technical airtight membranes, ranging from high vapour permeable self-adhesives, UV resistant membranes and vapour retarder and convection barriers.

TCL Hunt has a Quality Management System which includes ISO 9001 certification. That said, there is no finish line in business, so all staff are committed to the process of continuous improvement, relishing the challenge to always provide best practice solutions, with products and services that build trust and maintain customer confidence and loyalty.

*All products are sold through building merchants and roll-formers throughout the country.*

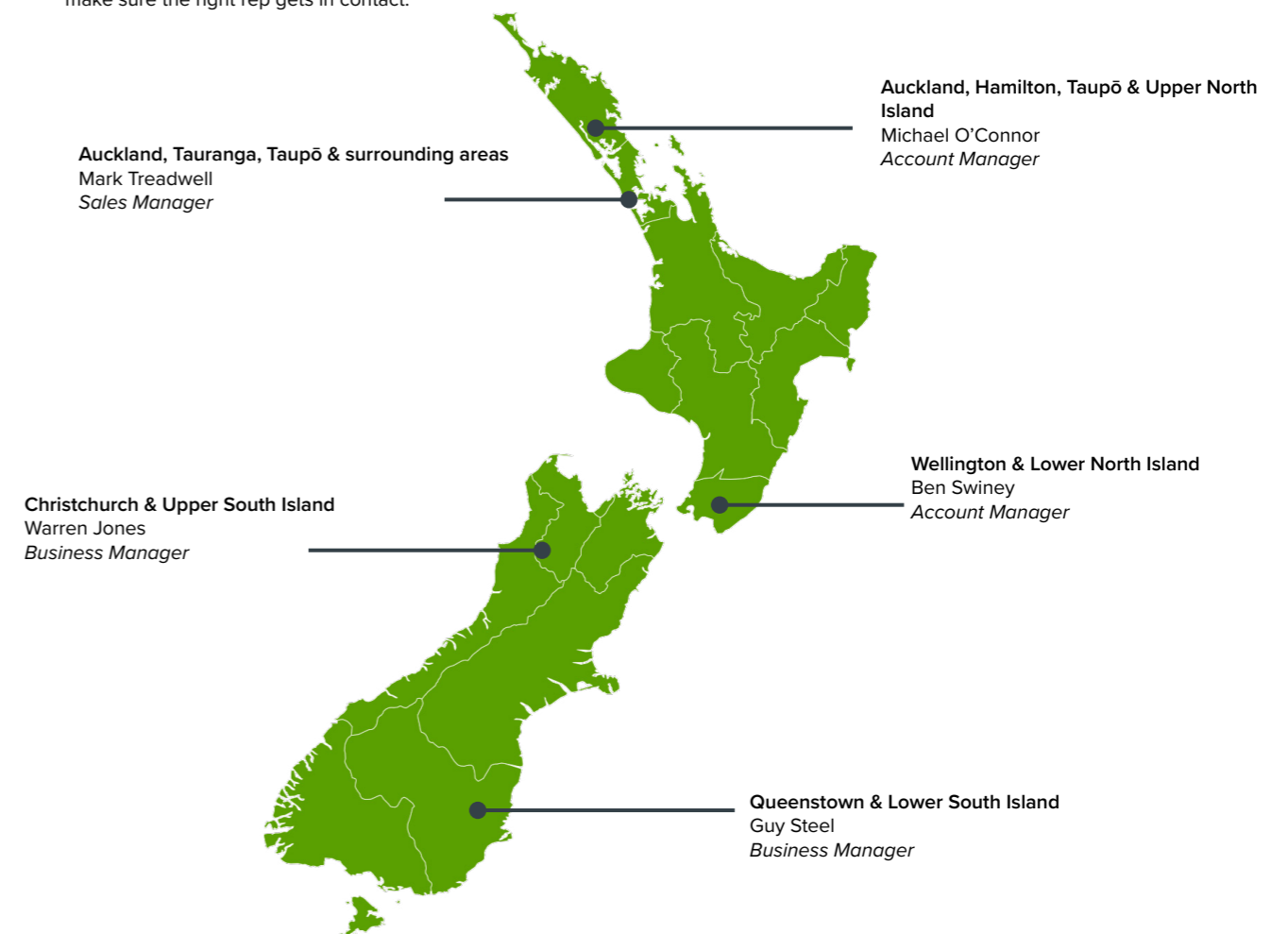
## Contents

### PRODUCTS

<b>DrIStud Range:</b> Wall Application .....	04
<b>DrIStud Range:</b> Synthetic Roof Underlays .....	06
<b>DrIStud Range:</b> White Faced Foil .....	07
<b>Vent Range:</b> .....	08
<b>Vent Range:</b> .....	09
<b>Proctor Range:</b> Airtight Membranes .....	10
<b>Proctor Range:</b> Other & System Accessories .....	12
COMPARISON CHART .....	14
WARRANTY .....	16

## Find Us

For more information, or if you need to get in contact with a sales rep, send your query through to [orders@drispace.co.nz](mailto:orders@drispace.co.nz) and we will make sure the right rep gets in contact.



**Company:** DrISpace **Web:** [www.drispace.co.nz](http://www.drispace.co.nz)  
**Email:** [orders@drispace.co.nz](mailto:orders@drispace.co.nz) **Telephone:** 0800 374 7883



## Products - DriStud Range Wall Application



### DRISTUD WALL WRAP

- CodeMark™ Certified
- Custom print available
- Fire retardant
- Air barrier
- UV resistant: 90 days
- Water resistant, absorbent and breathable
- Suited for residential and commercial builds
- Suitable for timber or steel framed buildings, suitable for gable ends
- Can be used where cladding is installed over a cavity system or direct fixed cladding
- Suitable for wind zones up to and including 'Very High' and 'Extra High' when used as a flexible underlay over a rigid wall underlay, as outlined in NZS 3604



AVAILABLE SIZES	
1370mm x 18.5m	25m <sup>2</sup>
1370mm x 73m	100m <sup>2</sup>
2740mm x 9.2m	25m <sup>2</sup>
2740mm x 36.5	100m <sup>2</sup>



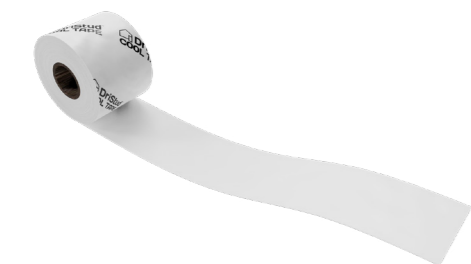
### DRISTUD REPEL - FLEXIBLE AIR BARRIER

Temporary weather protection allowing the continuation of internal work without cladding in place

- CodeMark™ Certified
- Custom print available
- Fire retardant (FR Index: 1)
- Vapour permeable and water resistant
- UV Exposure: 90 Days
- Can be direct fixed to timber and steel-framing
- Can be used where cladding is installed over a cavity system or direct fixed cladding
- Can be used for residential and commercial buildings
- Thick and strong
- 100m<sup>2</sup> available upon request (MOQ required)



AVAILABLE SIZES	
2740mm x 18.3	50m <sup>2</sup>
2740mm x 27.4m	75m <sup>2</sup>



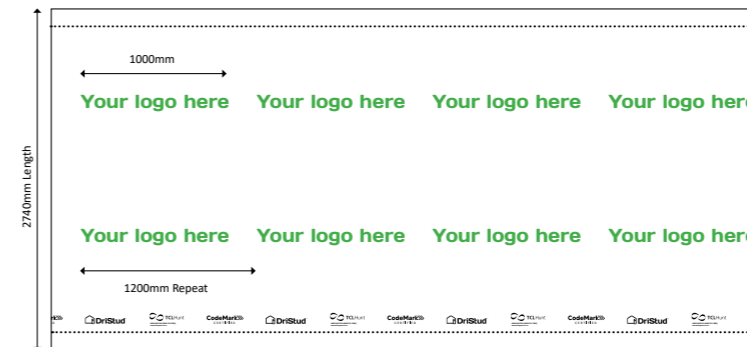
### DRISTUD COOL WINDOW FLASHING TAPE

- CodeMark™ Certified
- Service Temperature: -28°C to 80°C
- Resists UV up to 60 days
- Suitable for residential or commercial, timber or steel framed buildings.
- Can be used with DriStud Wall Wrap and with rigid air barriers made of plywood, fibre cement, OSB and James Hardie Board
- To NZS 3604 building wind zones up to and including 'Extra High'
- 381µm thick
- Only one layer on the sill



AVAILABLE SIZES	
200mm x 25m	4 rolls/carton
150mm x 25m	8 rolls/carton
75mm x 25m	16 rolls/carton

## Custom Print



### DRISTUD WALL WRAP CUSTOM PRINT

- Lead time: 1-4 weeks as custom print is done locally in New Zealand
- MOQ: 36
- Size available: 2740mm x 36.5m 100m<sup>2</sup>
- Either a 1 lane print or 2 lane print
- 7 colours to choose from (maximum 2 colours per print)

### AVAILABLE COLOURS: Maximum 2 colours per print

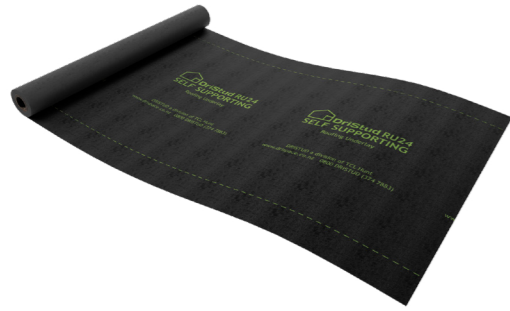


### DRISTUD REPEL CUSTOM PRINT

- Lead time: 1-4 weeks as custom print is done locally in New Zealand
- MOQ: c. 73 rolls (50m<sup>2</sup>) & 49 rolls (75m<sup>2</sup>)
- Sizes available: 2740mm x 18.3m (50m<sup>2</sup>) & 2740mm x 27.4m (75m<sup>2</sup>)
- 1 lane print
- Single colour custom print: black ink

For more information on custom print, visit [DriSpace.co.nz](http://DriSpace.co.nz) or call us on 0800 374 7883

## Products - DriStud Range Synthetic Roof Underlays



### DRISTUD RU24 ROOF UNDERLAY

- CodeMark™ Certified
- 170 gsm
- Self-supporting
- UV Exposure: 10 days
- Durability: 50 years
- Breathable and absorbent
- Suitable for wind zones up to and including 'Extra High', as outlined in NZS 3604
- Can be used only where fire retardant underlay is NOT required
- Suitable for direct fix with absorbent and non-absorbent cladding including metal cladding
- Can be used to line roof, wall and ceiling

#### AVAILABLE SIZES

1250mm x 40m	50m <sup>2</sup>
1500mm x 40m	60m <sup>2</sup>
2200mm x 50m	110m <sup>2</sup>



### DRISTUD FRU38 ROOF UNDERLAY

- CodeMark™ Certified
- 220 gsm
- Self-supporting
- UV Exposure: 20 days
- Fire retardant
- Durability: 50 years
- Breathable and absorbent
- Intended for use on new and existing buildings in wind zones up to and including 'Extra High', as defined in NZS 3604:2011
- Can be used to line roof, wall and ceiling
- Can be installed over timber and steel roof framing

#### AVAILABLE SIZES

1250mm x 40m	50m <sup>2</sup>
2500mm x 40m	100m <sup>2</sup>



### DRISTUD FRU36 ROOF UNDERLAY

- CodeMark™ Certified
- 150 gsm
- Self-supporting
- UV exposure: 10 days
- Fire retardant
- Durability: 50 years
- Breathable and absorbent
- Intended for use on new and existing buildings in wind zones up to and including 'Extra High', as defined in NZS 3604:2011
- Can be used to line roof, wall and ceiling
- Can be installed over timber and steel roof framing

#### AVAILABLE SIZES

1250mm x 40m	50m <sup>2</sup>
1350mm x 18.6m	25m <sup>2</sup>
1350mm x 55.6m	75m <sup>2</sup>
2700mm x 37.04m	100m <sup>2</sup>



## Products - DriStud Range White Faced Foil



### DRISTUD W11 WHITE FACED FOIL INSULATION

- CodeMark™ Certified
- Fire retardant
- Fully synthetic
- Vapour and water barrier
- Light diffuser insulation product
- Used for interior lining for commercial and industrial buildings, sports stadiums and warehousing facilities where extra clean white finish is required
- We recommend using Safety Mesh or Hexagonal Netting to support DriStud W11

#### AVAILABLE SIZES

1350mm x 56m	75m <sup>2</sup>
--------------	------------------



### DRISTUD W8 WHITE FACED FOIL INSULATION

- Medium weight
- Fire retardant
- Fully synthetic
- Extra heavy duty
- Specifically designed for commercial roofs and roof sarking with a high water barrier and medium vapour barrier classification
- Offers superior strength, durability and acts as a barrier to radiate heat, moisture, drafts and dust
- We recommend using Safety Mesh or Hexagonal Netting to support DriStud W8

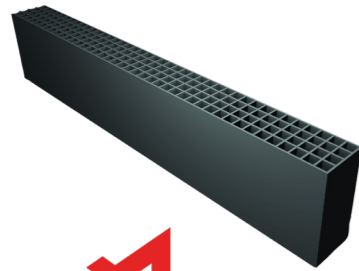
#### AVAILABLE SIZES

1350mm x 56m	75m <sup>2</sup>
--------------	------------------

### Important Note:

In applications where synthetic roof underlays (RU24, FRU36 & FRU38) are exposed or used as a ceiling and wall liner, such as in shed/industrial building applications, direct and reflected UV exposure must be avoided. They will degrade under prolonged UV exposure

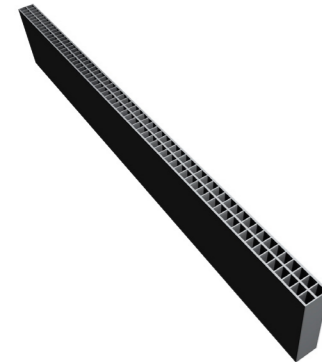
## Products - Vent Range



### 20mm THICK VENTED CAVITY BATTEN - VB20

- BRANZ Appraised (for both roof and wall application)
- Polypropylene ventilated batten
- 20mm cavity for ventilation and drainage in both roof and wall cavity
- Reduces the risk of moisture build up and condensation
- Convenient peel-off adhesive backing which eliminates the need for nails or glue, to adhere to timber, metal and building wraps for temporary fixing
- Easy to install
- Manufactured in 1800mm lengths for easy handling
- Strong and robust providing passive airflow of 16,000m<sup>2</sup> per linear metre
- Insect proof with 4mm vents preventing ingress of nesting insects
- All manufactured using some recycled plastics

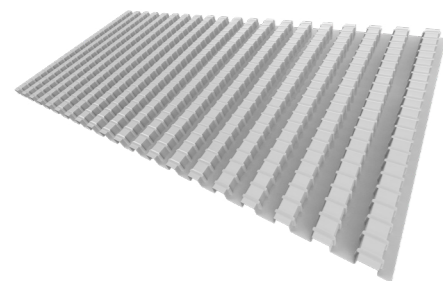
PRODUCT/CARTON SIZES	
Quantity	50 units per carton
Unit Length	1,800mm
LM Per Carton	90m



### 10mm THICK VENTILATION & DRAINAGE BATTEN - VB10

- BRANZ Appraised
- Polypropylene ventilated batten for roof applications
- 10mm cavity designed to facilitate passive airflow and cavity drainage between the roofing underlay or membrane and the roof cladding
- Prevents the transfer of dew point from the underside of the roofing underlay or membrane
- Convenient peel-off adhesive backing which eliminates the need for nails or glue, to adhere to timber, metal and underlays for temporary fixing
- Easy to install
- Manufactured in 1800mm lengths for easy handling
- Provides passive airflow of 8,000mm<sup>2</sup> per linear metre
- Insect proof with 4mm vents in preventing ingress of nesting insects
- All manufactured using some recycled plastics

PRODUCT/CARTON SIZES	
Quantity	50 units per carton
Unit Length	1,800mm
LM Per Carton	90LM

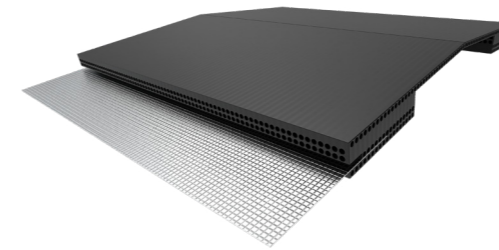


### INSULATION GUARD/ROLL PANEL VENT/EAVES BAFFLE - G502CL

- Designed to maintain a continuous 25mm air gap between the underside of the roofing membrane or sarking board and loft insulation at the eaves
- Provides a consistent flow of air into the roof space
- Castellated profile is laid across the top of the roof trusses/rafters parallel with the eaves level
- Ideal for trussed roofs of any degree pitch
- Suitable for both new build and roof renovation projects
- The extra width of the panel allows for better coverage when low pitch and deep insulation details are encountered
- 4 week weather exposure

PRODUCT/CARTON SIZES	
Quantity	2 units per carton
Unit Length	6,000 mm
LM Per Carton	12LM

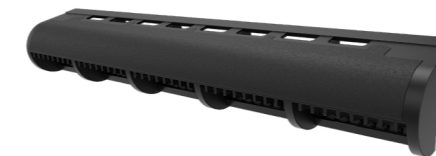
## Products - Vent Range



### RIDGE VENT/RIDGE VENT DEEP TROUGH - RV10P/RV10DT

- BRANZ Appraised
- RV10P: For roof cladding with a trough depth of less than 34mm
- RV10DT: For roof cladding with a trough depth of 34mm - 48mm
- Releases hot air and eliminates condensation
- Recommended for cold roof pitch of over 30° and Skillion Roof
- An adhesive and flexible aluminium flashing which is designed to form to roofing profiles and prevent water ingress on any pitch roof
- Forms part of a passive ventilation system that works year round with no moving parts or energy consumption
- Not visible when covered with ridge flashing (NB: Ridge flashing not included)
- Insect proof - Recommended 4mm vents to prevent ingress of nesting insects
- All manufactured using some recycled plastics

PRODUCT/CARTON SIZES	
Quantity	6 units per carton
Unit Length	1,200mm
LM Per Carton	7.2 m



### OVER FASCIA VENT - G1200N/G2500N

- Most practical and cost-efficient method of ventilating the eaves for skillion roof, and trussed roof with pitch less than 15°
- Easy to install
- Designed to discreetly ensure a calculated positive air flow into the roof space between the roof underlay and the fascia board
- G2500N - Airflow of 25,000mm<sup>2</sup> per linear metre or 1/50
- G1200N - Airflow of 12,000mm<sup>2</sup> per linear metre or 1/300
- Compatible with either timber or metal fascias
- Designed with 4mm evenly spaced openings specifically sized to prohibit large insects gaining access but wide enough to prevent capillary action
- Specifically designed for trussed roofs with pitches less than 15°, and skillion roofs of any degree pitch

PRODUCT/CARTON SIZES	
Quantity	20 units per carton
Unit Length	1,000 mm
LM Per Carton	20LM



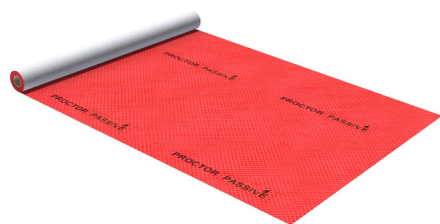
### EAVES COMB FILLER - G1275

- Designed with flexible fingers that adjust to fill the gaps left when using profiled tiles or steel roof cladding
- Prevents entry of birds and large insects
- Eliminates the need to make or buy expensive purpose made profiled fillers that can block necessary airflow into the roof spacing between underlay and roof cladding

PRODUCT/CARTON SIZES	
Quantity	50 units per carton
Unit Length	1,000 mm
LM Per Carton	50LM



## Products - Proctor Range Self-Adhering Airtight Membranes



### PROCTORPASSIVE WRAPTITE SA

- Self-adhering airtight and vapour permeable membrane for wall and roof applications
- Complies with AS/NZS 4200.1
- Lightweight and easy to install
- Multiple substrate compatibility
- No primer required on most clean substrates down to -6°C
- Low flammability (Flammability Index: 1)
- Tear, rip and puncture resistant during and after construction, reducing install costs
- Zero VOCs, and free of any chemicals on the Living Building Challenge Red List
- NZBC compliance
- Passive House Institute Certified Component phA
- Wide service temperature range, easily installed in all climates

#### PRODUCT SIZE

Roll Width	1500mm
Roll Length	50m
Coverage	75m <sup>2</sup>

### PROCTORPASSIVE WRAPTITE UV-SA

- Complies with AS/NZS 4200.1
- For prolonged UV exposure or open joint cladding application
- Vapour permeable adhesive layer
- High vapour permeance
- Tough material resists punctures and tears
- Multiple substrate compatibility
- Low VOC's
- Exceptional airtightness

#### PRODUCT SIZE

Roll Width	1500mm
Roll Length	50m
Coverage	75m <sup>2</sup>

## Products - Proctor Range Airtight Membrane



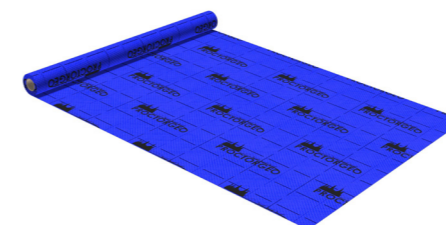
### PROCTORPASSIVE RAINSCREEN RS-IT

- Highly UV stable (120 days UV exposure)
- High water resistance
- High vapour permeable wall membrane
- For open joint cladding
- Air tight
- Features factory applied integrated tape (RS-IT)

#### PRODUCT SIZE

Roll Width	1500mm
Roll Length	35m
Coverage	52.5m <sup>2</sup>

## Products - Proctor Range Internal Vapour Control/Airtight Membranes

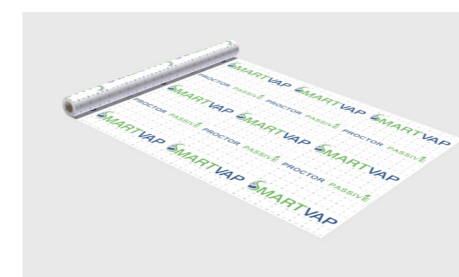


### PROCTORPASSIVE GEOVAP120

- Vapour retarder and convection barrier
- Two-layer polyefin non-woven membrane resists the flow of vapour of both diffusion and air movement through wall, ceiling and floor assemblies
- Protects the building fabric and insulation from condensation and related problems such as mould, timber rot, corrosion and loss of thermal resistance
- Ideal for swimming pools and humid buildings
- Factory applied integrated tape
- Non-perforated and non-conductive

#### PRODUCT SIZE

Roll Width	1500mm
Roll Length	30m
Coverage	45m <sup>2</sup>



### PROCTORPASSIVE SMARTVAP

- Complies with AS/NZS 4200.1
- Light duty air barrier with variable vapour diffusion resistance
- Fire retardant (FR Index: ≤5)
- High water resistance
- Non-perforated and non-conductive
- Lightweight and easy to handle
- Compatible with SabreSeal MS Facade and SabreBond SMP50

#### PRODUCT SIZE

Roll Width	1500mm
Roll Length	30m
Coverage	45m <sup>2</sup>

## Products - Proctor Range Other



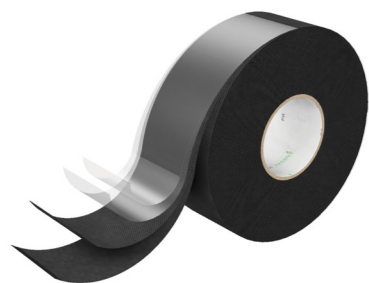
### PROCTORGEO HC9 DRAINAGE MAT

- Three dimensional PP monofilament spacer for roof
- Provides permanent drainage channel for condensate or moisture that may get under the roof sheet
- Provides space for continuous air movement between the roof deck/underlay and metal roof
- Reduces corrosion risk - of particular importance with zinc or galvanized steel roof sheets
- UV resistant during installation
- Reduction in rain and hail impact noise on metal roofing up to 24.8dB
- Allows for the movement of the roof sheet under temperature fluctuations
- Contributes to reduction in temperature of the roof substrate in summer conditions
- Allows for evaporation of moisture from the roofing structure
- Flexible and lightweight for ease of install

#### PRODUCT SIZE

Roll Width	1400mm
Roll Length	30m
Coverage	42m <sup>2</sup>

## Products - Proctor System Accessories Windows and Openings Applications

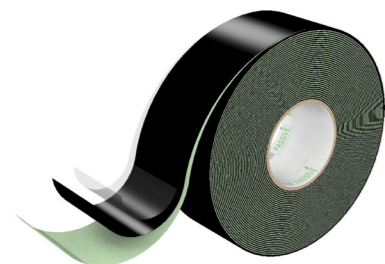


### PROCTOR DRIFLASH TAPE

- Window flashing tape with high vapour permeance
- Suitable for High UV Exposure areas
- No primer required on most clean substrates
- Tough material; resists punctures and tears
- Multiple substrate compatibility
- Wide service temperature range
- Low VOC's
- Initial low tack for adjustability
- Exceptional for airtightness

#### AVAILABLE SIZES

150mm x 25m  
200mm x 25m



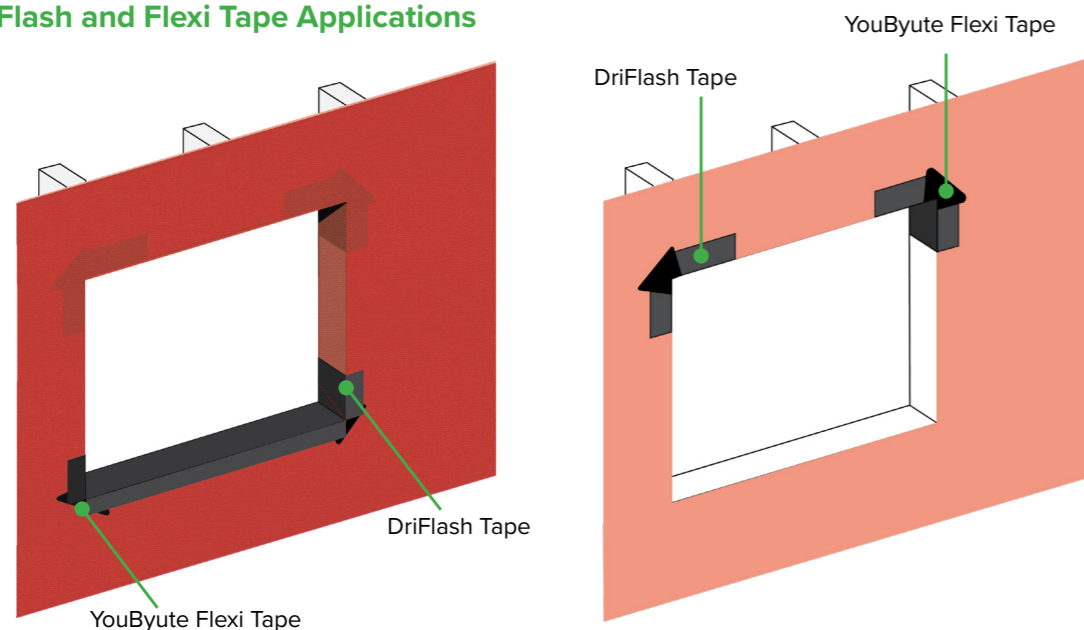
### PROCTOR YOUBYUTE FLEXI TAPE

- Suitable for corner mould applications
- Highly stretchable
- High tack
- Long term water resistance
- High ageing resistance
- Compatibility with Proctor Rainscreen (RS-IT)
- Air and water tight
- Low emission of VOC

#### AVAILABLE SIZES

80mm x 10m | 6 rolls/carton

### DriFlash and Flexi Tape Applications



## Products - Proctor System Accessories Joining or Seam Tapes



### PROCTOR AB TAPE

- Air Barrier tape to be used with **ProctorPassive SmartVap and ProctorPassive GeoVap120**
- Single side pliable polyethylene tape
- Stretchable with scrim to prevent over expansion
- Air and vapour tight
- Moisture resistance
- Excellent ageing resistance
- Multiple substrate compatibility
- Low emission of VOC

#### AVAILABLE SIZES

60mm x 25mm | 10 rolls/carton



### PROCTORWRAP UV TAPE

- Joining tape for high UV exposure to be used with **ProctorPassive Rainscreen RS-IT**
- High vapour permeance (AS4200.1:2017 Class 4)
- No primer required on most clean substrates
- Tough material; resists punctures and tears
- Multiple substrate compatibility
- Wide service temperature range
- Low VOC's
- Initial low tack for adjustability
- Exceptional for airtightness

#### AVAILABLE SIZES

100mm x 25m | 10 rolls/carton

## Products - Proctor System Accessories Sealing Tape for Penetrations & Fixings



### PROCTOR YOUBYUTE SEALING TAPE

- High tack
- Long term water resistance
- High ageing resistance
- Compatibility with Proctor Rainscreen (RS-IT) and ProctorPassive Wraptite SA/ UVC
- Air and water tight
- Low emission of VOC

#### AVAILABLE SIZES

50mm x 20m | 12 rolls/carton

## DriSpace Comparison Chart

DRISPACE	THERMAKRAFT	MARSHALL INDUSTRIES	PROCLIMA	MAXCLAD	CAVIBAT	MASONS
<b>ROOF UNDERLAY</b>						
DriStud FRU38 - 220gsm: Fire Retardant, Synthetic, Self Support Roof Underlay	Covertex 407	-	-	-	-	VHP Maxi Roof Underlay
DriStud FRU36 - 150gsm: Fire Retardant, Synthetic, Self Support/Heavy Weight Roof Underlay	Covertex 403, Covertex 405	-	Solitex Extasana 3000 (150gsm)	-	-	VHP Ultra Roof Underlay, VHP Strong Roof Underlay
DriStud RU24 - 170gsm: Black Faced Synthetic, Self Support/Heavy Weight Roof Underlay	Covertex 401	-	-	-	-	VHP Value Roof Underlay
DriStud RU22 - 145 gsm: Grey Faced Synthetic, Self-Support Roof Underlay	Covertex 215	-	-	-	-	-
DriStud W11: White Faced, Fire Retardant, Medium Weight Synthetic Foil	Thermakraft 397	-	-	-	-	-
DriStud W8: White Faced, Fire Retardant, Medium Weight Synthetic Foil (153gsm)	Thermobar 344 (105gsm)	-	-	-	-	-
<b>BUILDING WRAPS &amp; TAPES</b>						
DriStud Wall Wrap: Fire Retardant, Absorbent, Breathable, Air Barrier Wall Wrap	Watergate Plus	Hydra Wall Underlay, Tekton Building Wrap	Solitex Extasana	-	-	Barricade FR
DriStud REPEL: Fire Retardant, Vapour Permeable, Water Resistant, Flexible Air Barrier	-	-	-	-	-	UNI PLUS Flexible Air Barrier, UNI PRO Flexible Air Barrier
DriStud Cool Window Flashing Tape: Service Temp 28°C	Thermaflash	Superstick	Tescon Extoseal	-	-	40 Below Flashing Tape
ProctorPassive Rainscreen (RS-IT): High UV Fire Retardant Vapour Permeable Wall Underlay for Rainscreen cladding	-	-	-	-	-	-

## DriSpace Comparison Chart

DRISPACE	THERMAKRAFT	MARSHALL INDUSTRIES	PROCLIMA	MAXCLAD	CAVIBAT	MASONS
<b>PEEL &amp; STICK UNDERLAY &amp; AIRTIGHT LAYER</b>						
ProctorPassive Wraptite SA: Peel and Stick Fire Retardant Vapour Permeable Wall and Roof Underlay	-	-	Solitex Extasana Adhero	VaproShield	-	Barricade WD
ProctorPassive Wraptite UV-SA: Peel and Stick High UV Fire Retardant Vapour Permeable Wall Underlay for Rainscreen Cladding	-	-	-	RevealShield	-	-
ProctorPassive SmartVap: Vapour Control Layer to make the ceiling and wall airtight	-	-	Intello/Intello Plus	-	-	-
ProctorGeo Vap120: Vapour Control Layer to make the ceiling and wall airtight for indoor swimming pool	-	-	-	-	-	-
<b>BATTENS &amp; ACCESSORIES</b>						
VENT VB20: 20mm Vented Cavity Battens for Roof and Wall	-	-	-	-	Cavibat	-
VENT VB10: 10mm Ventilation and Drainage Battens for Roof	-	-	-	-	-	-
ProctorPassive TBS: Non-combustible thermal break battens	-	-	-	-	-	-
ProctorPassive HC9 Drainage Mat: 9mm Ventilation and Drainage PP Mesh	Drainage Mat	-	Seperation Mesh	-	-	-



## TCL Warranty for DriSpace Products

### COVER

**TCL Hunt Ltd** (hereinafter **TCL**) warrants to the first owner of the “**DriSpace Building Product**” (hereinafter **Product**) for a period of 15 years, from the date of original purchase, that the **Product** will be free from manufacturing defects when properly installed and maintained according to **Product** published installation instructions. (Refer to the **DriSpace** website for published installation procedures.) Should any such defect appear, **TCL** will provide either a replacement of the defective **Product** or a refund of the original purchase price at **TCL**'s sole and exclusive option in accordance with the prorating schedule set forth herein. Nothing in this warranty shall exclude or modify any legal rights a customer may have under the Consumer Guarantees Act 1993 or otherwise (except where the same may be excluded or modified by law). Under no circumstances and in no event shall **TCL** be liable for any labour charges or other expenses whatsoever in connection with the removal or installation of either the original or replacement **Product**. In the event of replacement under the terms of this warranty, the original warranty shall apply to the replaced **Product** and will extend for the balance of the warranty period in effect at the time the **Product** proved defective.

**Number of years of use obtained after the original purchase date TCLs' prorated share of warranty obligation as follows:**

Year 1: Original purchase price. Years 2 through 15: Purchaser shall incur a 6.6% reduction per year. If the original purchase price cannot be established by the covered person or entity by producing a copy of the original sales receipt, the cost will be determined by **TCL** in its sole and reasonable discretion. **TCL** replacement of the defective **Product** or granting of a refund pursuant to the terms of Section 1 of this Warranty SHALL BE THE SOLE EXCLUSIVE REMEDY available to the covered person or entities with respect to any defect. **TCL** will not refund or pay any costs in connection with labour or supporting materials. Any refund or material replacement by **TCL** shall constitute a full settlement and release of all claims of any covered person or entity hereunder for damages or other relief and shall be a complete bar to any litigation filed subsequently to the covered person or entity's acceptance of such refund or material replacement.

**UNDER NO CIRCUMSTANCES SHALL DRISPACE PRODUCTS BE RESPONSIBLE FOR INCIDENTAL OR CONSEQUENTIAL DAMAGES WITH RESPECT TO ECONOMIC LOSS, INJURY, DEATH, OR PROPERTY DAMAGE, WHETHER AS A RESULT OF BREACH OF THIS WARRANTY, NEGLIGENCE OR OTHERWISE.**

### CONDITIONS OF WARRANTY

- The **Product** must be stored according to the supplier's instructions at all times between purchase and installation.
- The **Product** must be installed according to the **DriSpace** printed installation procedures as set forth on the **DriSpace** website and published literature, and must be designed and constructed in strict compliance with all the relevant provisions of the current New Zealand Building Code, regulations and standards and in accordance with the terms specified in any building consent issued by the local or territorial authority in which the project is undertaken.
- The **Product** must be installed by or under the direct supervision of a registered or licensed building practitioner. The **Product** must be installed in accordance with the New Zealand Metal Roofing and Wall Cladding Code of practice.
- If conflicts exist between applicable codes and **DriSpace** installation instructions, the installer is responsible to contact DriSpace customer service for clarification of installation instructions.
- Failure to install and finish the **Product** per the **Product** published instructions may affect **Product** performance and will void the Warranty.

## TCL Warranty for DriSpace Products

### WHAT THE CUSTOMER MUST DO

- The claimant must provide proof that he/she is a covered person or entity and notify **TCL** in writing within thirty (30) days after discovery of any claimed defect or failure covered by this Warranty and before beginning any permanent repair.
- The claimant must provide proof of the date of purchase and that the **DriSpace** installation procedures were followed, as well as proof of property ownership.
- Upon discovery of a possible defect or failure, the covered person or entity must immediately, and at the covered person or entity's own expense, provide protection of all property that could be affected until the defect or failure is remedied.
- The property owner will be required to submit a sample and photographs of the defective material to **TCL** for analysis. **TCL** will then investigate the claim and examine the material claimed to be defective.
- If requested, the property owner must provide access for examination by any agent of **TCL**. If a defect covered by this warranty is confirmed, **TCL**, within a reasonable amount of time after the inspection, will replace the **Product**, or refund the original purchase price of the defective **Product**, pursuant to the terms of this warranty.

### LIMITATIONS

This warranty does not provide protection against any failure, defect or damage caused by situations and events beyond normal exposure conditions, including but not limited to:

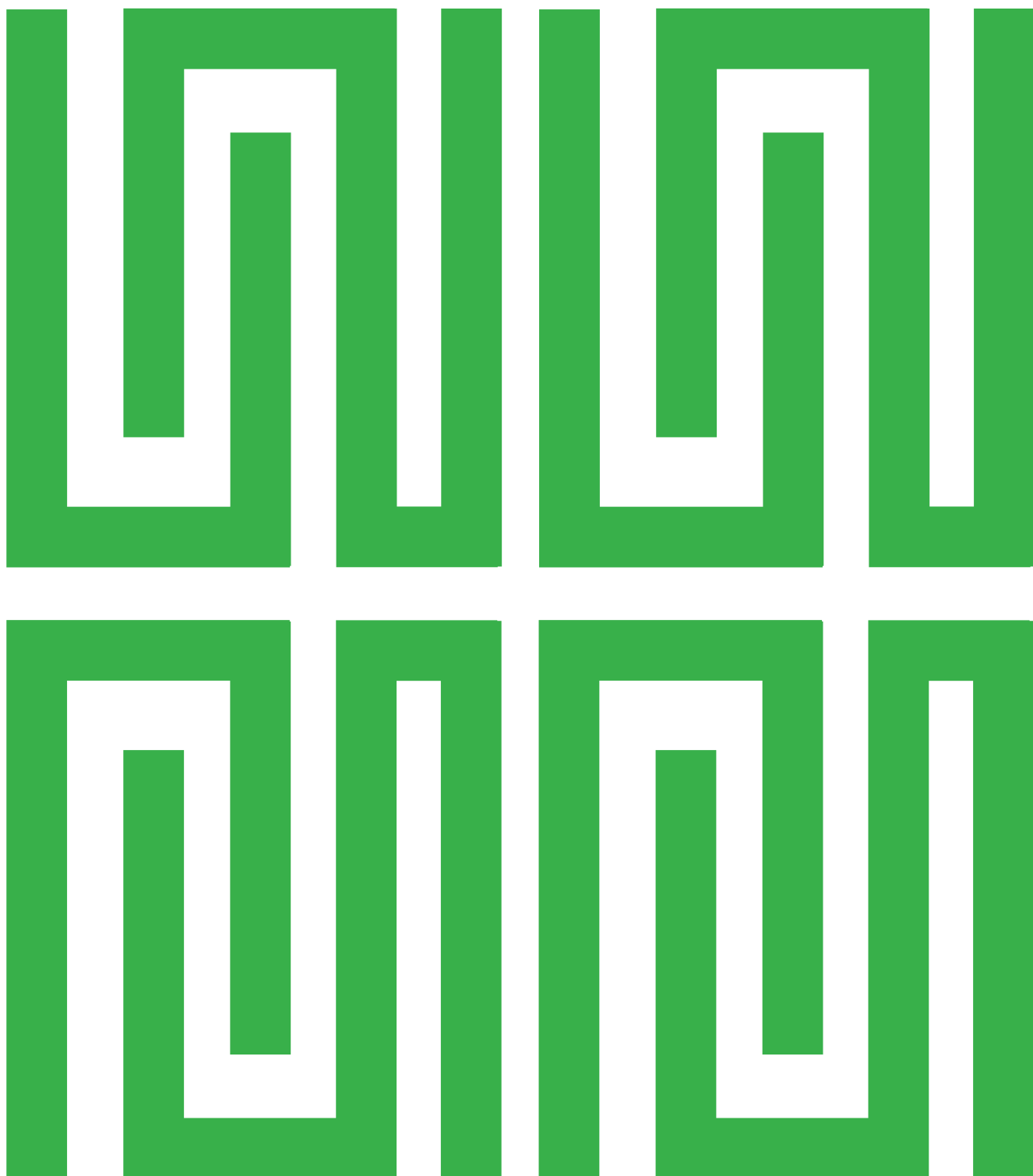
- Misuse, abuse, neglect or improper handling, shipping or storage, or installation of the **Product**.
- Improper application or application not in strict adherence to the **DriSpace** written application instructions.
- Improper installation of framing or other accessories.
- Settlement of structural movement and/or movement of materials to which the **Product** is attached.
- Damage from incorrect design of the structure.
- Use of accessories that do not properly receive and/or secure the **Product**.
- Impact of foreign objects, fire, earthquake, flood, lightning, hurricane, tornado, severe weather (including, but not limited to, unusual climate conditions) or other casualty or act of God.
- **DriSpace Products** are not a food for mould and mildew; however, materials that land on the **Product** may be. Accordingly, growth of mould, mildew, fungi, bacteria, or any organism on any surface of the **Product** (whether on the exposed or unexposed surfaces) and in this respect, any claims of damage caused by mould or mildew are expressly excluded.
- **Lack of proper maintenance or any cause other than manufacturing defects attributable to DriSpace Products.**

**TCL will have no responsibility hereunder for defective Product subjected to further processing or alteration after shipment.**

- **TCL** reserves the right to discontinue or modify any of its **Products** without notice to the property owner/consumer and shall not be liable as a result of such discontinuance or modification. If **TCL** replaces any material under this warranty, it may substitute **Product** designated to be of comparable quality or price range in the event the **Product** initially installed has been discontinued or modified.

### DISCLAIMER & OTHER CONDITIONS

- In no event will **TCL** be liable for any incidental, special, indirect, or consequential damages of any kinds, including any damage to the building, its contents, or any persons therein, whether resulting from non-delivery or from the use, misuse, or inability to use the **Product**, or from defects in the **Product**. This warranty replaces all other oral or written warranties, liabilities, or obligations of **TCL**.
- All Warranties, Conditions, Liabilities and Obligations other than those specified in this Warranty are excluded to the fullest extent allowed by law. In particular, where the **Product** is supplied for the purposes of a business, the guarantees contained in the consumer guarantees act 1993 do not apply.
- In no event shall **TCL** be liable for consequential or incidental damages of any kind, including any damage to the building, its contents, or any persons therein, resulting from the breach of the Warranty. No Field Representative or Distributor or Dealer of **TCL** is authorized to make any change or modification to this Warranty.



DRISPACE IS A DIVISION OF

